

BRIGADOON



BRIGADOONVILLAGE.COM

Features

2,760 sq. ft. Total
4 Bedrooms
3 1/2 Baths

Amenities

Fireplace in Great Room
Open Great Room, Breakfast
and Kitchen
First Floor Laundry
Hardwood Floors
Granite Countertops in Kitchen
and Master
10 ft. First Floor Ceilings
9 ft. Second Floor Ceilings

House plan provided by:
EPLANS.COM

Sales Information

For more information about available properties at
Brigadoon Village, contact Coldwell Banker On Site Realty:

Sonya Inman
Realtor/Owner
sonyainman@aol.com
sonyainman.net
256.777.0765 direct

Troy Elmore
Broker, Owner
trelmore@aol.com
troyelmore.com
256.777.3710 direct
256.679.6353 cell

Coldwell Banker On Site Realty
coldwellbankerrealty.org
1804 Hwy 72
Athens, AL 35613
256.232.9604 office
256.232.9583 fax



Sycamore House



FRONT ELEVATION



REAR ELEVATION

The drama of this home through its use multilevel hip roof lines is definitely European inspired. Designed by respected architect Steven Fuller, architectural theme begins with the arch recessed entry and is repeated through the use and placement of additional windows featuring arched transoms. This ribbon of windows permits sunlight to flow through the main level, while the second story windows emits the light of the outdoors to enhance the magnificent two story foyer.

THE ELEVATION AND FLOOR PLANS CONTAINED HEREIN ARE NOT TO SCALE AND ARE GRAPHIC ILLUSTRATIONS FOR MARKETING AND PRESENTATION PURPOSES ONLY. THEY DO NOT CONSTITUTE A CONTRACT OR GUARANTEE ON THE PART OF EGYPT BLUFF PROPERTIES, OR A MEMBER OF OUR BUILDER'S GUILD. ACTUAL HOMES MAY VARY PRIOR TO OR DURING CONSTRUCTION. EXTERIOR MATERIALS MAY VARY. SOME FEATURES MAY BE OPTIONAL. ACCORDINGLY, NEITHER THE MATERIALS, NOR ANY COMMUNICATION MADE OR GIVEN IN THE CONNECTION WITH THESE MATERIALS, MAY BE DEEMED TO CONSTITUTE ANY REPRESENTATION OR WARRANTY OR MAY OTHERWISE BE RELIED UPON BY ANY PERSON OR ENTITY UNLESS CONVEYED IN WRITTEN FORM. ALL BUILDERS' GUILD MEMBERS RESERVE THE RIGHT TO SUBSTITUTE MATERIALS AND COMPONENTS OF SIMILAR QUALITY, AND TO CHANGE FEATURES, OPTIONS, PRICE AND ARCHITECTURAL DETAILS WITHOUT PRIOR NOTICE.

Sycamore House

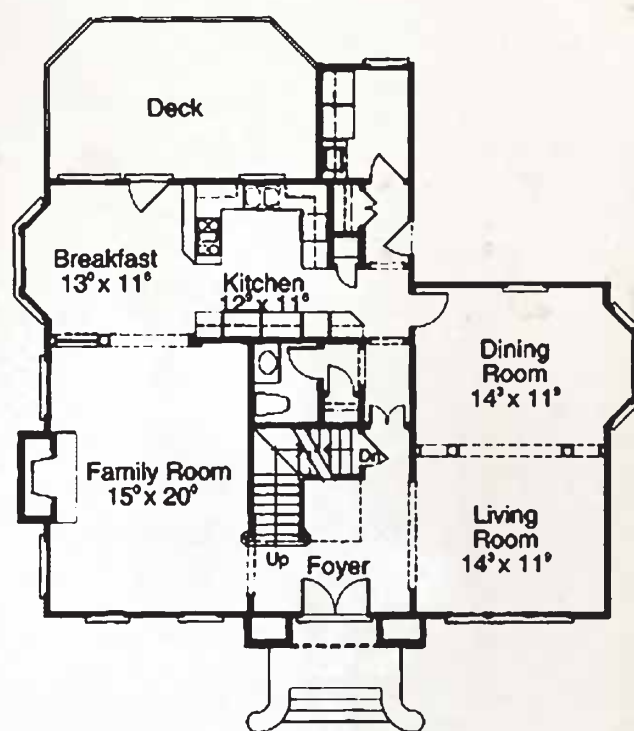
Upon first entering, the openness of this home is readily apparent. The more formal living room or study and dining room are brought together separated only by decorative columns. To the left of the foyer the comfortable family room awaits, with large fireplace and open rail detailing allowing access to the breakfast room and kitchen.

The open staircase to the gallery above leads to the grand master suite. The master suite with its tray ceiling is entered through large double doors and is complimented by a luxurious bath featuring a whirlpool tub, his and her vanities, along with a large walk in closet.

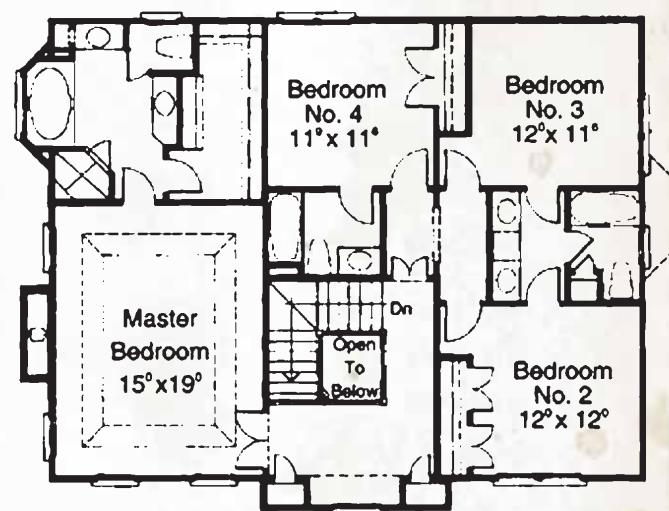
Each home's front façade will begin 15 feet from the edge of the lot providing ample room for a front lawn. Each front lawn will be landscaped with a canopy tree, ornamental tree and a combination of evergreen and flowering foliage, thus, creating the feel of historic, traditional neighborhoods.

A wonderful, intimate courtyard will provide a private getaway for each homeowner. Here the owner may find an outdoor kitchen, fireplace or lovely garden screened by evergreen foliage from the adjacent homes. Underground irrigation for each home site will provide convenience to the homeowners and a lush look to the entire community.

All Avenue and Cottage lots will have rear entry alleyway garages preserving the beautiful front streetscapes. Each garage will be generously sized, accommodating two large vehicles and providing abundant storage. In most cases, covered breezeways will connect the garage to the main house. Lovely wrought iron mailboxes will be located on the alleyways for convenient retrieval of mail.



MAIN LEVEL



UPPER LEVEL



THE ELEVATION AND FLOOR PLANS CONTAINED HEREIN ARE NOT TO SCALE AND ARE GRAPHIC ILLUSTRATIONS FOR MARKETING AND PRESENTATION PURPOSES ONLY. THEY DO NOT CONSTITUTE A CONTRACT OR GUARANTEE ON THE PART OF EGYPT BLUFF PROPERTIES, OR A MEMBER OF OUR BUILDER'S GUILD. ACTUAL HOMES MAY VARY PRIOR TO OR DURING CONSTRUCTION. EXTERIOR MATERIALS MAY VARY. SOME FEATURES MAY BE OPTIONAL. ACCORDINGLY, NEITHER THE MATERIALS, NOR ANY COMMUNICATION MADE OR GIVEN IN THE CONNECTION WITH THESE MATERIALS, MAY BE DEEMED TO CONSTITUTE ANY REPRESENTATION OR WARRANTY OR MAY OTHERWISE BE RELIED UPON BY ANY PERSON OR ENTITY UNLESS CONVEYED IN WRITTEN FORM. ALL BUILDERS' GUILD MEMBERS RESERVE THE RIGHT TO SUBSTITUTE MATERIALS AND COMPONENTS OF SIMILAR QUALITY, AND TO CHANGE FEATURES, OPTIONS, PRICE AND ARCHITECTURAL DETAILS WITHOUT PRIOR NOTICE.