

BRIGADOON



BRIGADOONVILLAGE.COM

Features

2,365 sq. ft. Total
3 Bedrooms
3 1/2 Baths

Amenities

Fireplace in Great Room
First Floor Master Suite with
Fireplace
First Floor Laundry
Veranda spanning the Master,
Great Room and Kitchen
Hardwood Floors
Granite Countertops in Kitchen
and Master
10 ft. First Floor Ceilings
9 ft. Second Floor Ceilings

Sales Information

For more information about available properties at
Brigadoon Village, contact Coldwell Banker On Site Realty:

Sonya Inman
Realtor/Owner
sonyainman@aol.com
sonyainman.net
256.777.0765 direct

Troy Elmore
Broker, Owner
trelmore@aol.com
troyelmore.com
256.777.3710 direct
256.679.6353 cell

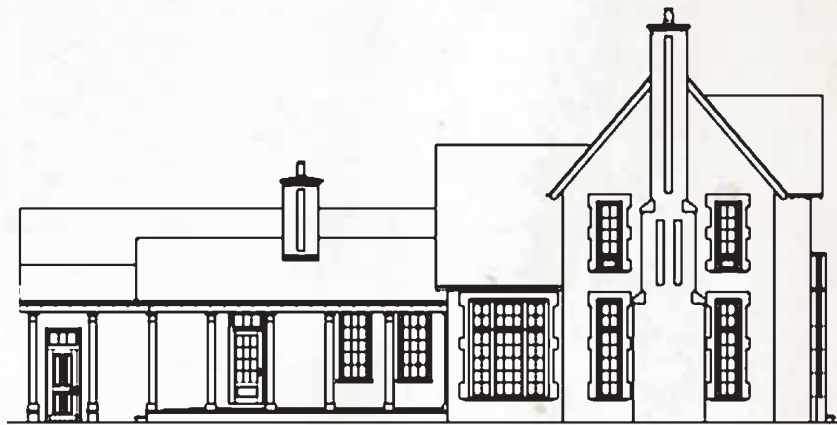
Coldwell Banker On Site Realty
coldwellbankerrealty.org
1804 Hwy 72
Athens, AL 35613
256.232.9604 office
256.232.9583 fax



Fullbrook Cottage



FRONT ELEVATION



SIDE ELEVATION

This home has been custom designed for Brigadoon Highland Village by local architect Chris Sides.
It combines the charm and beauty of an old world façade with the luxuries of modern amenities
and the comfort of an open floor plan.

THE ELEVATION AND FLOOR PLANS CONTAINED HEREIN ARE NOT TO SCALE AND ARE GRAPHIC ILLUSTRATIONS FOR MARKETING AND PRESENTATION PURPOSES ONLY. THEY DO NOT CONSTITUTE A CONTRACT OR GUARANTEE ON THE PART OF EGYPT BLUFF PROPERTIES, OR A MEMBER OF OUR BUILDER'S GUILD. ACTUAL HOMES MAY VARY PRIOR TO OR DURING CONSTRUCTION. EXTERIOR MATERIALS MAY VARY. SOME FEATURES MAY BE OPTIONAL. ACCORDINGLY, NEITHER THE MATERIALS, NOR ANY COMMUNICATION MADE OR GIVEN IN THE CONNECTION WITH THESE MATERIALS, MAY BE DEEMED TO CONSTITUTE ANY REPRESENTATION OR WARRANTY OR MAY OTHERWISE BE RELIED UPON BY ANY PERSON OR ENTITY UNLESS CONVEYED IN WRITTEN FORM. ALL BUILDERS' GUILD MEMBERS RESERVE THE RIGHT TO SUBSTITUTE MATERIALS AND COMPONENTS OF SIMILAR QUALITY, AND TO CHANGE FEATURES, OPTIONS, PRICE AND ARCHITECTURAL DETAILS WITHOUT PRIOR NOTICE.

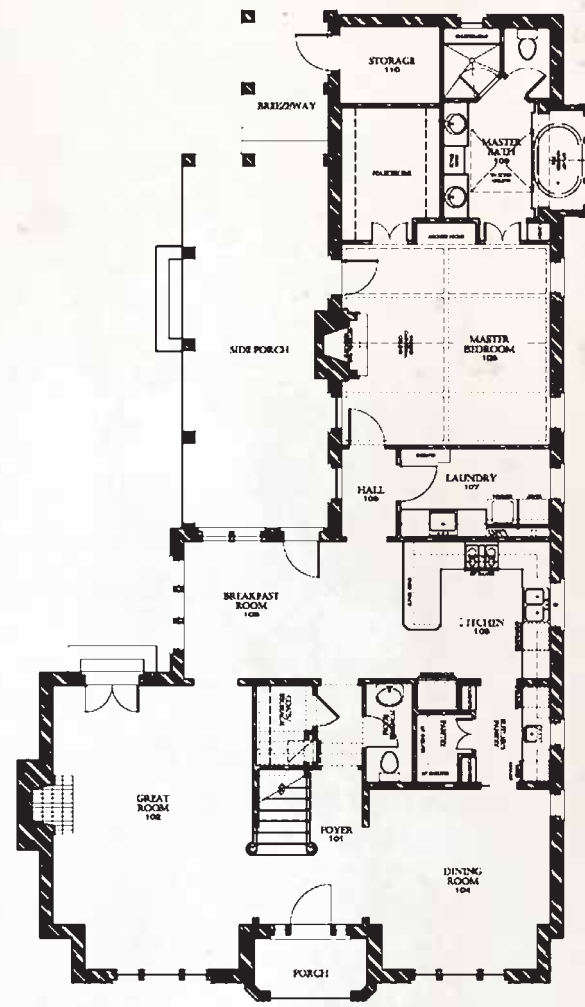
Fullbrook Cottage

This impressive and charming entry opens to a lovely staircase. An expansive open floorplan begs for entertaining. A large great room with cathedral ceiling invites with a fireplace and French doors that open to the inter courtyard. The breakfast area also opens to the courtyard. A convenient butler's pantry connects the gourmet kitchen and dining room. The master suite offers a fireplace and opens to the veranda and courtyard. The master bath is designed for truly relaxing with a whirlpool tub, shower and his and hers vanities.

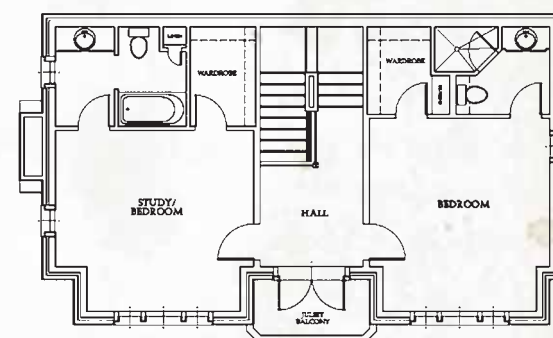
Each home's front façade will begin 15 feet from the edge of the lot providing ample room for a front lawn. Each front lawn will be landscaped with a canopy tree, ornamental tree and a combination of evergreen and flowering foliage, thus, creating the feel of historic, traditional neighborhoods.

A wonderful, intimate courtyard will provide a private getaway for each homeowner. Here the owner may find an outdoor kitchen, fireplace or lovely garden screened by evergreen foliage from the adjacent homes. Underground irrigation for each home site will provide convenience to the homeowners and a lush look to the entire community.

All Avenue and Cottage lots will have rear entry alleyway garages preserving the beautiful front streetscapes. Each garage will be generously sized, accommodating two large vehicles and providing abundant storage. In most cases, covered breezeways will connect the garage to the main house. Lovely wrought iron mailboxes will be located on the alleyways for convenient retrieval of mail.



MAIN LEVEL



UPPER LEVEL



THE ELEVATION AND FLOOR PLANS CONTAINED HEREIN ARE NOT TO SCALE AND ARE GRAPHIC ILLUSTRATIONS FOR MARKETING AND PRESENTATION PURPOSES ONLY. THEY DO NOT CONSTITUTE A CONTRACT OR GUARANTEE ON THE PART OF EGYPT BLUFF PROPERTIES, OR A MEMBER OF OUR BUILDER'S GUILD. ACTUAL HOMES MAY VARY PRIOR TO OR DURING CONSTRUCTION. EXTERIOR MATERIALS MAY VARY. SOME FEATURES MAY BE OPTIONAL. ACCORDINGLY, NEITHER THE MATERIALS, NOR ANY COMMUNICATION MADE OR GIVEN IN THE CONNECTION WITH THESE MATERIALS, MAY BE DEEMED TO CONSTITUTE ANY REPRESENTATION OR WARRANTY OR MAY OTHERWISE BE RELIED UPON BY ANY PERSON OR ENTITY UNLESS CONVEYED IN WRITTEN FORM. ALL BUILDERS' GUILD MEMBERS RESERVE THE RIGHT TO SUBSTITUTE MATERIALS AND COMPONENTS OF SIMILAR QUALITY, AND TO CHANGE FEATURES, OPTIONS, PRICE AND ARCHITECTURAL DETAILS WITHOUT PRIOR NOTICE.