

BRIGADOON



BRIGADOONVILLAGE.COM

### Features

2,921 sq. ft. Total  
3 Bedrooms  
4 Baths

### Amenities

Fireplace in Great Room  
First Floor Master Suite with Garden Tub  
First Floor Laundry  
Courtyard access from the Master, Office, Great Room and Kitchen  
Hardwood Floors  
Granite Countertops in Kitchen and Master  
10 ft. First Floor Ceilings  
9 ft. Second Floor Ceilings

House plan provided by:  
EPLANS.COM

### Sales Information

For more information about available properties at Brigadoon Village, contact Coldwell Banker On Site Realty:

**Sonya Inman**  
Realtor/Owner  
sonyainman@aol.com  
sonyainman.net  
256.777.0765 direct

**Troy Elmore**  
Broker, Owner  
trelmore@aol.com  
troyelmore.com  
256.777.3710 direct  
256.679.6353 cell

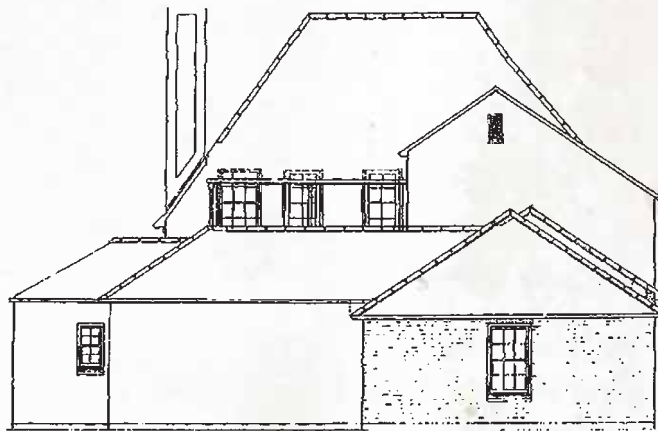
**Coldwell Banker On Site Realty**  
coldwellbankerrealty.org  
1804 Hwy 72  
Athens, AL 35613  
256.232.9604 office  
256.232.9583 fax



## Beauvoir House



FRONT ELEVATION



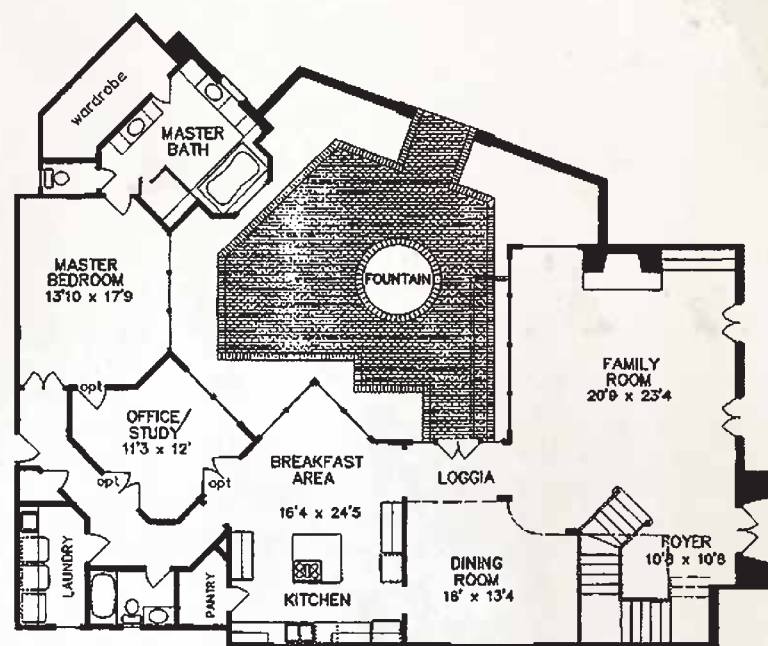
REAR ELEVATION

This chateau is packed with luxurious amenities, starting with an open foyer and wide living space that opens to a private loggia. Walls of rear windows look out to this sumptuous area, which could include a fountain, fireplace or outdoor kitchen.

THE ELEVATION AND FLOOR PLANS CONTAINED HEREIN ARE NOT TO SCALE AND ARE GRAPHIC ILLUSTRATIONS FOR MARKETING AND PRESENTATION PURPOSES ONLY. THEY DO NOT CONSTITUTE A CONTRACT OR GUARANTEE ON THE PART OF EGYPT BLUFF PROPERTIES, OR A MEMBER OF OUR BUILDER'S GUILD. ACTUAL HOMES MAY VARY PRIOR TO OR DURING CONSTRUCTION. EXTERIOR MATERIALS MAY VARY. SOME FEATURES MAY BE OPTIONAL. ACCORDINGLY, NEITHER THE MATERIALS, NOR ANY COMMUNICATION MADE OR GIVEN IN THE CONNECTION WITH THESE MATERIALS, MAY BE DEEMED TO CONSTITUTE ANY REPRESENTATION OR WARRANTY OR MAY OTHERWISE BE RELIED UPON BY ANY PERSON OR ENTITY UNLESS CONVEYED IN WRITTEN FORM. ALL BUILDERS' GUILD MEMBERS RESERVE THE RIGHT TO SUBSTITUTE MATERIALS AND COMPONENTS OF SIMILAR QUALITY, AND TO CHANGE FEATURES, OPTIONS, PRICE AND ARCHITECTURAL DETAILS WITHOUT PRIOR NOTICE.

## Beauvoir House

A gourmet kitchen with a cooktop island counter serves the formal dining room. An office/study is located conveniently off the master suite. The sequestered master suite offers a garden tub and generous wardrobe space. Two generously sized bedrooms with private full baths are located upstairs.

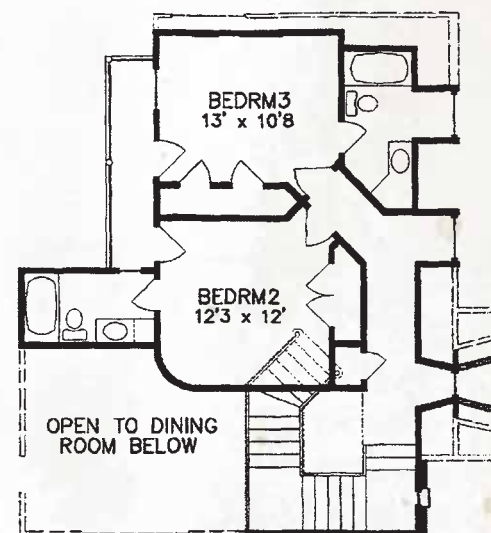


MAIN LEVEL

Each home's front façade will begin 15 feet from the edge of the lot providing ample room for a front lawn. Each front lawn will be landscaped with a canopy tree, ornamental tree and a combination of evergreen and flowering foliage, thus, creating the feel of historic, traditional neighborhoods.

A wonderful, intimate courtyard will provide a private getaway for each homeowner. Here the owner may find an outdoor kitchen, fireplace or lovely garden screened by evergreen foliage from the adjacent homes. Underground irrigation for each home site will provide convenience to the homeowners and a lush look to the entire community.

All Avenue and Cottage lots will have rear entry alleyway garages preserving the beautiful front streetscapes. Each garage will be generously sized, accommodating two large vehicles and providing abundant storage. In most cases, covered breezeways will connect the garage to the main house. Lovely wrought iron mailboxes will be located on the alleyways for convenient retrieval of mail.



UPPER LEVEL



THE ELEVATION AND FLOOR PLANS CONTAINED HEREIN ARE NOT TO SCALE AND ARE GRAPHIC ILLUSTRATIONS FOR MARKETING AND PRESENTATION PURPOSES ONLY. THEY DO NOT CONSTITUTE A CONTRACT OR GUARANTEE ON THE PART OF EGYPT BLUFF PROPERTIES, OR A MEMBER OF OUR BUILDER'S GUILD. ACTUAL HOMES MAY VARY PRIOR TO OR DURING CONSTRUCTION. EXTERIOR MATERIALS MAY VARY. SOME FEATURES MAY BE OPTIONAL. ACCORDINGLY, NEITHER THE MATERIALS, NOR ANY COMMUNICATION MADE OR GIVEN IN THE CONNECTION WITH THESE MATERIALS, MAY BE DEEMED TO CONSTITUTE ANY REPRESENTATION OR WARRANTY OR MAY OTHERWISE BE RELIED UPON BY ANY PERSON OR ENTITY UNLESS CONVEYED IN WRITTEN FORM. ALL BUILDERS' GUILD MEMBERS RESERVE THE RIGHT TO SUBSTITUTE MATERIALS AND COMPONENTS OF SIMILAR QUALITY, AND TO CHANGE FEATURES, OPTIONS, PRICE AND ARCHITECTURAL DETAILS WITHOUT PRIOR NOTICE.